



# ARIES MARINE CORPORATION

## M/V KYLIE WILLIAMS Class 220' DP 2 DWT 2,940

### Dimensions:

Length	220'
Beam	54'
Draft Loaded	16'
Clear Deck	138' X 43.5'

### Tonnage and Speed:

Gross Tons	1,659
Speed	12 Knots

### Class Certifications and Classifications:

ABS Maltese Cross A- 1 Oceans  
ABS Loadline  
ABS Classed Hull & Machinery  
ABS D.P.2  
USCG Certified  
I.M.O. Solas Ready  
U.S. Flagged  
Boatrac Communications  
Internet/Satellite Phone Communications

### Cargo Transfer Rate:

Fuel Oil	750 GPM @ 200 TDH
Fresh/Drill Water	850 GPM @ 200 TDH
Liquid Mud	1,000 GPM @ 200 TDH
Dry Bulk	1,000 Cubic Feet/Hour

### Capacities:

Fuel Oil	200,000 Gallons
Drill Water	175,000 Gallons
Liquid Mud	252,000 Gallons - 6,000 bbls
Dry Bulk	6,000 CF (5 Tanks)
Potable Water	45,000 Gallons



### Machinery:

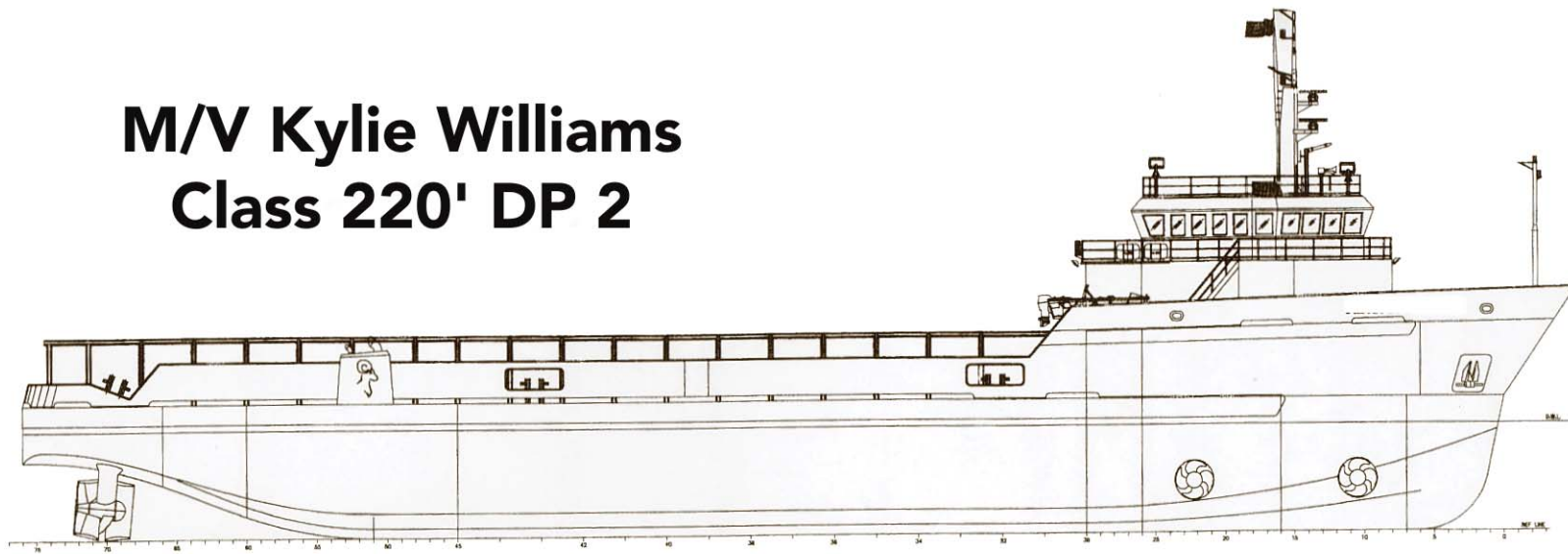
Main Engines	(2) CAT 3516 B 4,200 HP
	IMO 200 Compliant
Bow Thruster	(2) Rolls Royce TT 1,650 DPN
Generators	(2) CAT 3340B-370 KW
Automatic Paralleling	
Liquid Mud Pumps	Mission Magnum 5 X 4 X 15
Bulk Compressor	Leroy 80 PSI
Emergency Generator	(1) CAT 3304 B 105 KW
Firefighting Equipment	Off Ship 2400 GPM

### Accommodations:

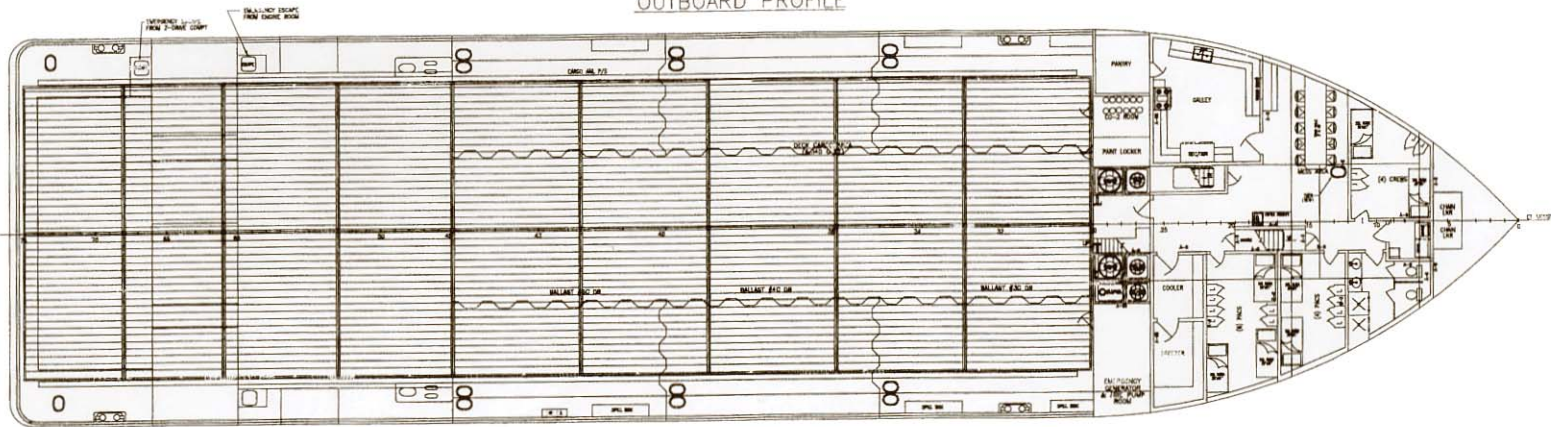
Berths 22  
Galley  
Mess Area

# M/V Kylie Williams

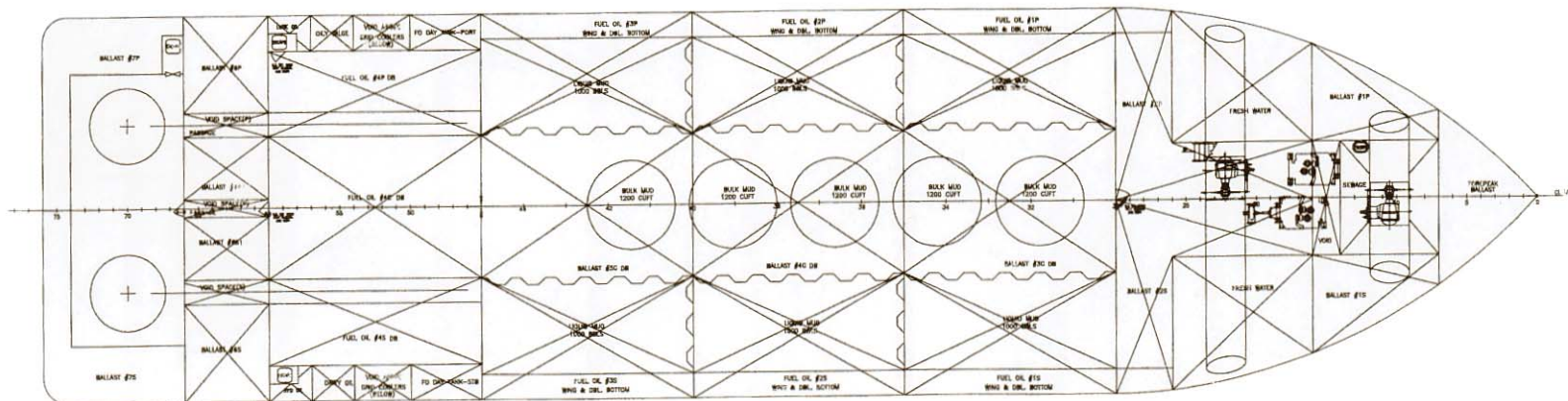
## Class 220' DP 2



OUTBOARD PROFILE



MAIN DECK



HOLD PLAN