



# ARIES MARINE CORPORATION

## RAM II

Liftboat Class150'

### Dimensions

|                     |               |
|---------------------|---------------|
| Length Overall      | 94'           |
| Length (Barge Only) | 81'           |
| Beam Overall        | 63'           |
| Beam (Barge Only)   | 38'           |
| Depth (Barge Only)  | 8             |
| Design Draft        | 6'6"          |
| Open Deck Area      | 2,500 Sq. Ft' |

### Generators & Capacities

|               |                             |
|---------------|-----------------------------|
| Engines       | Two (2) 4-71 Detroit Diesel |
| Generator     | Two (2) 50kw                |
| Fuel          | Approx. 4,000 Gallons       |
| Potable Water | Approx. 9,000 Gallons       |

### Hull Characteristics & Legs

|                |                    |
|----------------|--------------------|
| Gross Tonnage  | Under 200          |
| Net Tonnage    | Approx. 130        |
| Max Deck Cargo | 140,000#           |
| Number of Legs | 3                  |
| Length         | 150'               |
| Size           | 42" Diameter       |
| Wall Thickness | ½" (Braced Inside) |

### Crane (Nautilus) Hydraulic & Propulsion

|                      |                                |
|----------------------|--------------------------------|
| Capacity             | 25 & 40 Ton                    |
| Boom Length (25 ton) | Telescopic 70'                 |
| Boom Length (40 TON) | Fixed 70'                      |
| Engines              | Two (2) 12V-71N Detroit Diesel |
| Rated HP             | Approx. 900                    |
| Reduction Gear       | Twin Disc. Ratio: 3.5          |

### Pads & Jacking System

|                             |                    |
|-----------------------------|--------------------|
| Length                      | 24'                |
| Width                       | 12'                |
| Depth                       | 24'                |
| Configuration               | Raked on Both Ends |
| Max. Working Water Depth    | 90'                |
| Max. Sea Conditions(Jacked) | 5'                 |



### Estimated Speed

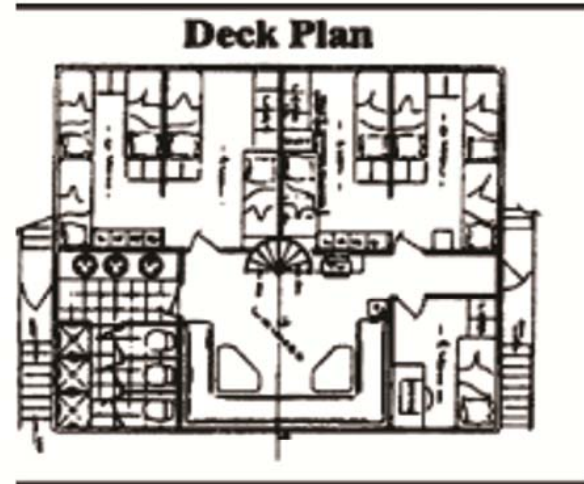
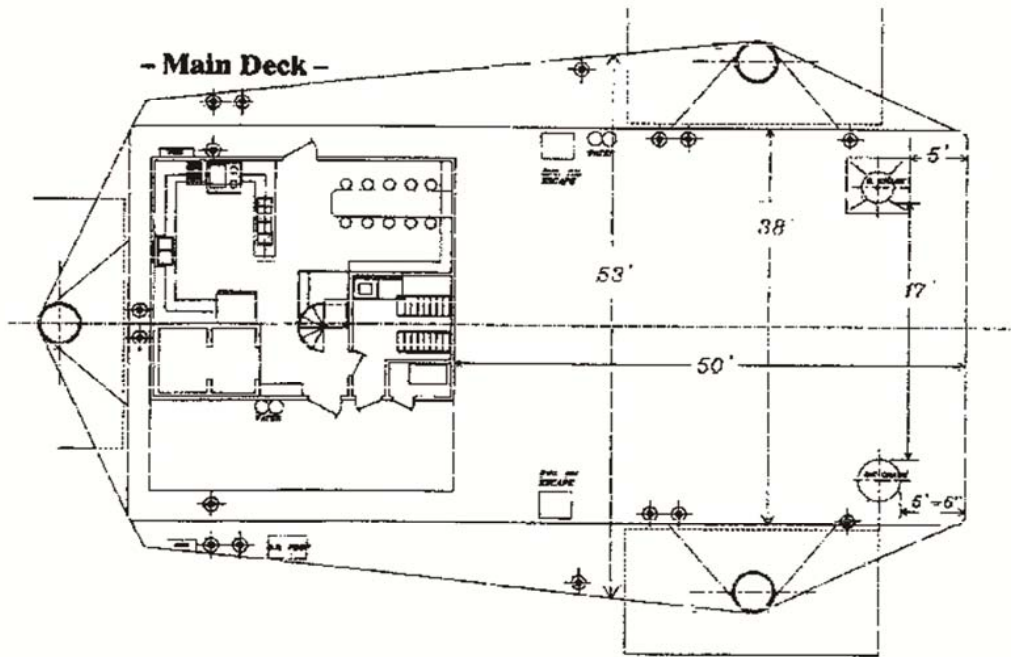
Eight (8) Knots

### Electronics

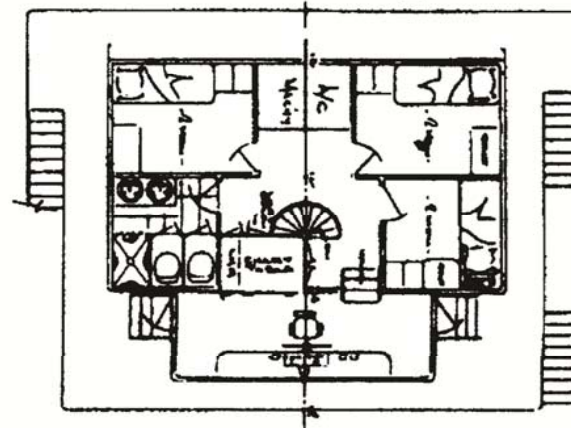
VHF  
SSB  
Fathometer  
Tilt Alarm  
GPS  
Loud Hailer  
Radar  
DSS TV

Available Berths (excluding crew) 22

# Liftboat Class 150'



## Pilot House Arrangement



# CLASS 150' - M/V RAM II

## LIFTING LOAD CAPACITY CHART NAUTILUS MODEL - 180B

### 70' BOOM CRANE

|                |                        | MAIN HOIST      |              | MAIN HOIST         |                     | AUXILIARY HOIST    |                 |               |
|----------------|------------------------|-----------------|--------------|--------------------|---------------------|--------------------|-----------------|---------------|
| RADIUS<br>(FT) | BOOM<br>ANGLE<br>(DEG) | 6- PART REEVING |              | 6- PART REEVING    |                     | 1- PART REEVING    |                 |               |
|                |                        | HIGH SPEED      |              | LOW SPEED          |                     | Stati<br>c<br>(LB) | Dynami<br>c(LB) | Personnel(LB) |
|                |                        | STATIC<br>(LB)  | DYNAMIC (LB) | Stati<br>c<br>(LB) | Dyna<br>mic<br>(LB) |                    |                 |               |
| 12             | 18                     | 34,534          | 34,534       | 80,118             | 53,875              | 8,870              | 8,870           | 3,397         |
| 15             | 79                     | 34,534          | 34,534       | 76,107             | 50,321              | 8,870              | 8,870           | 3,397         |
| 20             | 75                     | 34,534          | 34,534       | 68,260             | 45,090              | 8,870              | 8,870           | 3,397         |
| 25             | 70                     | 34,534          | 34,534       | 61,890             | 40,843              | 8,870              | 8,870           | 3,397         |
| 30             | 66                     | 34,534          | 33,359       | 50,664             | 33,359              | 8,870              | 8,870           | 3,397         |
| 35             | 61                     | 34,534          | 28,092       | 42,763             | 28,092              | 8,870              | 8,870           | 3,397         |
| 40             | 57                     | 34,534          | 24,183       | 36,900             | 24,183              | 8,870              | 8,870           | 3,397         |
| 45             | 51                     | 32,376          | 21,167       | 32,376             | 21,167              | 8,870              | 8,870           | 3,397         |
| 50             | 46                     | 28,779          | 18,769       | 28,779             | 18,769              | 8,870              | 8,870           | 3,397         |
| 55             | 40                     | 25,850          | 16,817       | 25,850             | 16,817              | 8,870              | 8,870           | 3,397         |
| 60             | 33                     | 23,418          | 15,195       | 23,418             | 15,195              | 8,870              | 8,870           | 3,397         |
| 65             | 23                     | 21,366          | 13,827       | 21,366             | 13,827              | 8,870              | 8,870           | 3,397         |
| 70             | 0                      | 16,311          | 10,457       | 16,311             | 10,457              | 8,870              | 8,870           | 3,397         |