



M/V ABIGAIL CLAIRE Offshore Supply Vessel Class 220' DP-II

DIMENSIONS and REGULATORY INFORMATION

Length (Overall)	220 ft 0 in	Beam	54 ft 0 in	Depth	19 ft 0 in
Gross Tonnage	1659 ITC	Net Tonnage	1-571	Draft Loaded	16 ft 0 in
Dead Weight	2651 LT			Clear Deck	138' X 43.5'
IMO	9372224			Official Number	1174543
Classification	ABS Maltese Cross A-Oceans+			Flag	U.S.
Certifications	USCG Certified, IMO Solas Ready, Loadline, American Bureau of Shipping, +DP-II				

PERFORMANCE

Max Speed	12 knots	Fuel Consumption:	110gal/hr 416 liters/hr
Cruise Speed	10 knots	Fuel Consumption:	71.5 gal/hr 270 liters/hr

PROPULSION, MACHINERY AND STEERING

Main Engines	(2) CAT 3516B IMO 200 Complaint	Total Horsepower	4200 HP
Bow Thruster	(2) CAT 3412	Total Horsepower	1500 HP
Main Propulsion	(2) Rolls Royce TT 1,650 DPN (2) Z DRIVES AQUAMASTER	Liquid Mud Pumps	(2) Mission Magnum 5 X 4 X 15
Generators	(2) CAT 3340B-370KW Automatic Paralleling	Bulk Compressor	(1) Leroi @ 80 PSI - 740 cfm
Emergency Generator	(1) CAT 3304B 105KW	Firefighting Equipment	Off ship 2400 GPM

CAPACITY AND DELIVERY RATES

Fuel Oil	200,000 Gallons - 4,762 BBLS	Fuel Oil	750 GPM @ 200 TDH
Drill Water	175,000 Gallons - 4,167 BBLS	Drill Water	875 GPM @ 200 TDH
Liquid Mud	252,000 Gallons - 6,000 BBLS (6-1,000 bbl Tanks)	Liquid Mud	1,000 GPM @ 200 TDH
Dry Bulk	6,000 CF (5-1,200 cu ft tanks)	Dry Bulk	1,000 CF/hr
Potable Water	45,000 Gallons - 1,071 BBLS		
Deck Load	1450 LT	Deck Load Rating	1,024 lbs/c2

SPECIAL FEATURES

VSAT Communications	Equipped with Boatracs
----------------------------	------------------------

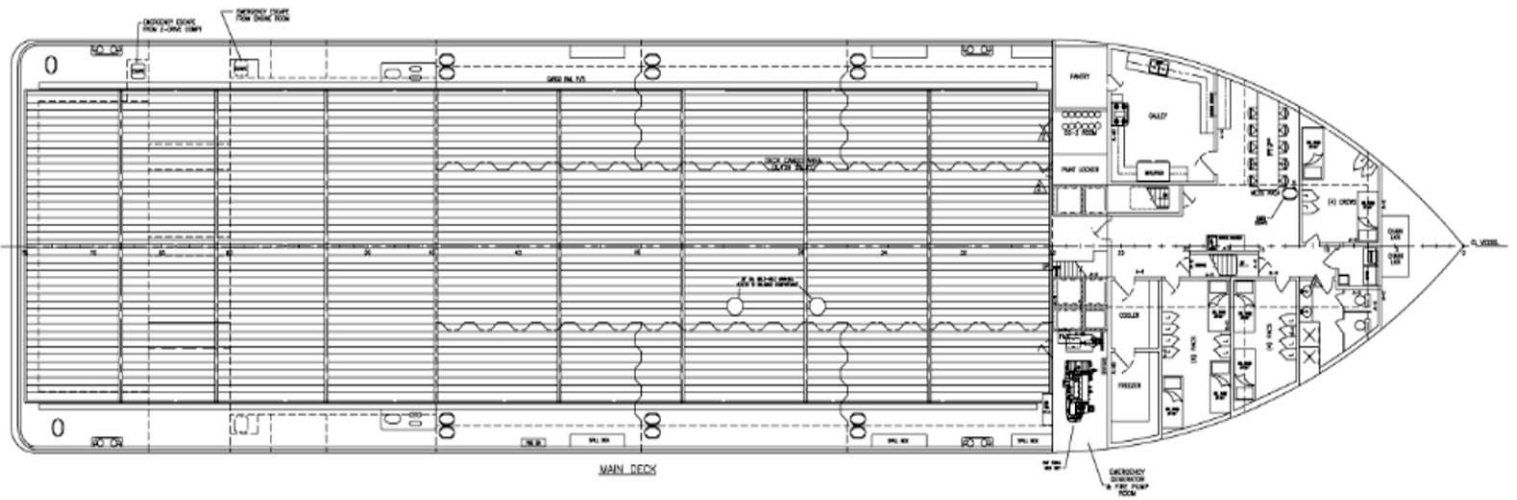
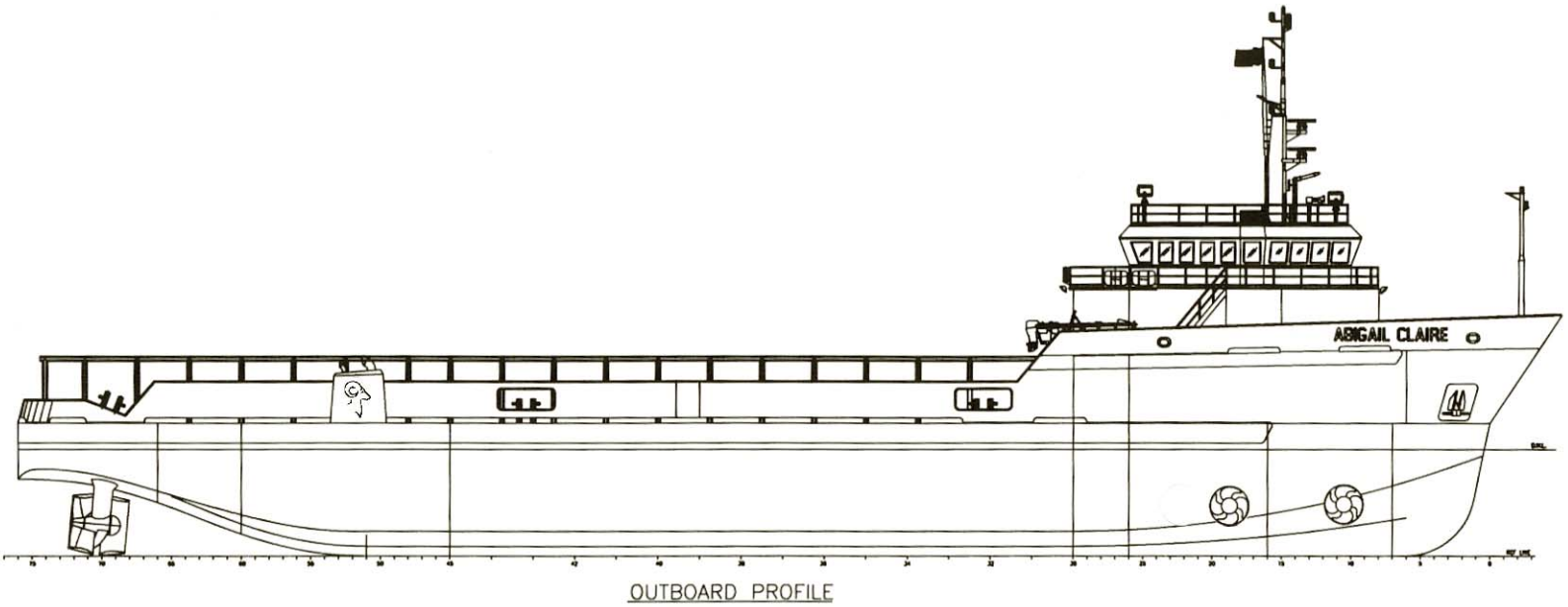
ACCOMODATIONS

8 Air Conditioned/Heated Staterooms - Certified for 26 person berthing

M/V Abigail Claire

Class 220'

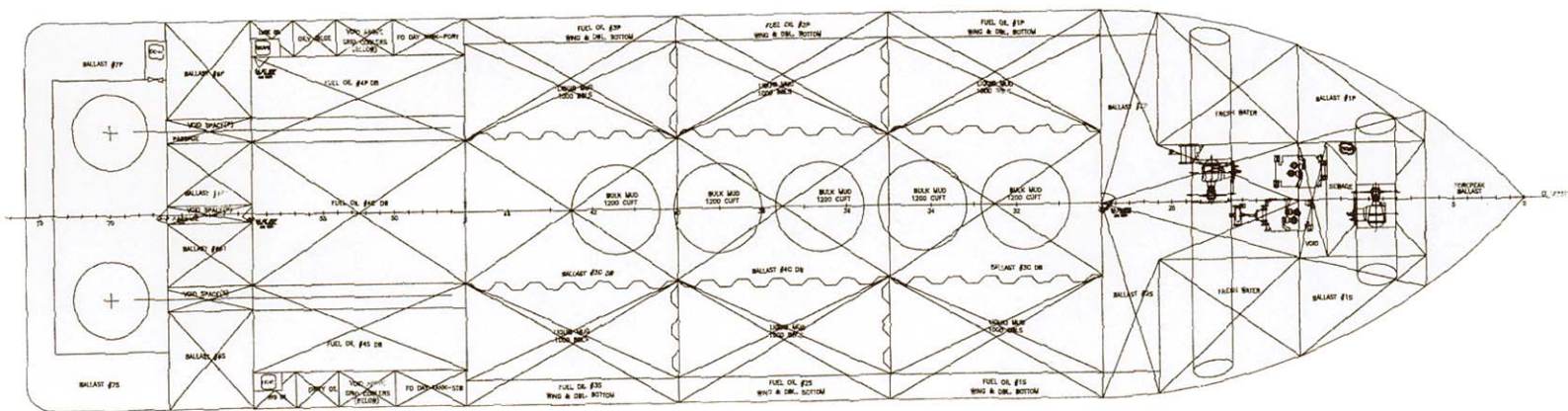
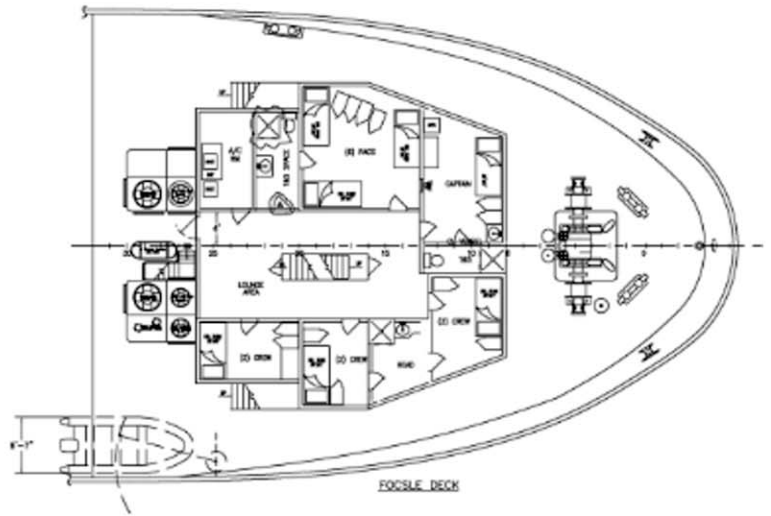
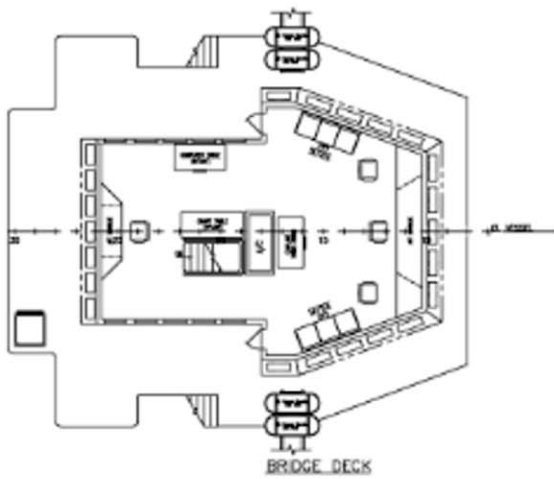
DP - II



M/V Abigail Claire

Class 220'

DP - II



HOLD PLAN