



M/V RAM VII Liftboat Vessel Class 145' Leg

DIMENSIONS AND REGULATORY INFORMATION

Length (Overall)	81'	Open Deck Area	2,500 sq ft
Beam (Overall)	63'	Design Draft	6'6"
Beam (Barge Only)	38'		
Depth (Barge Only)	8'		
Classification	USCG	Flag	U.S.
Certifications	USCG		

HULL CHARACTERISTICS & LEGS

Gross Tonnage	194	Number of Legs	3
Net Tonnage	132	Length	145'
Max Deck Cargo	140,000#	Size	42" diameter
		Wall Thickness	1/2" (braced inside)

PERFORMANCE & FUEL

Max Speed	8 knots	Fuel Capacity	4,000 gallons
Cruise Speed	8 knots	Potable Water	9,000 gallons

MACHINERY & PROPULSION

Main Engines	Two (2) 12V-71N Detroit Diesel	Generator Engines	Two (2) 4-71 Detroit Diesel
Rated Ship	680 HP (approx.)	Generator	Two (2) 50 kw
Reduction Gear	Twin Disc: 3.5 ratio		

CRANE (NAUTILIUS) HYDRAULIC

Capacity	10 & 40 Ton	Boom Length (10 Ton)	45' Telescopic
		Boom Length (40 Ton)	70' Telescopic

PADS & JACKING SYSTEM

Length	24'
Width	12'
Depth	2'
Configuration	Raked On Both Ends
Max. Working Water Depth	90'
Max. Sea Conditions (Jacking)	5'

ELECTRONICS

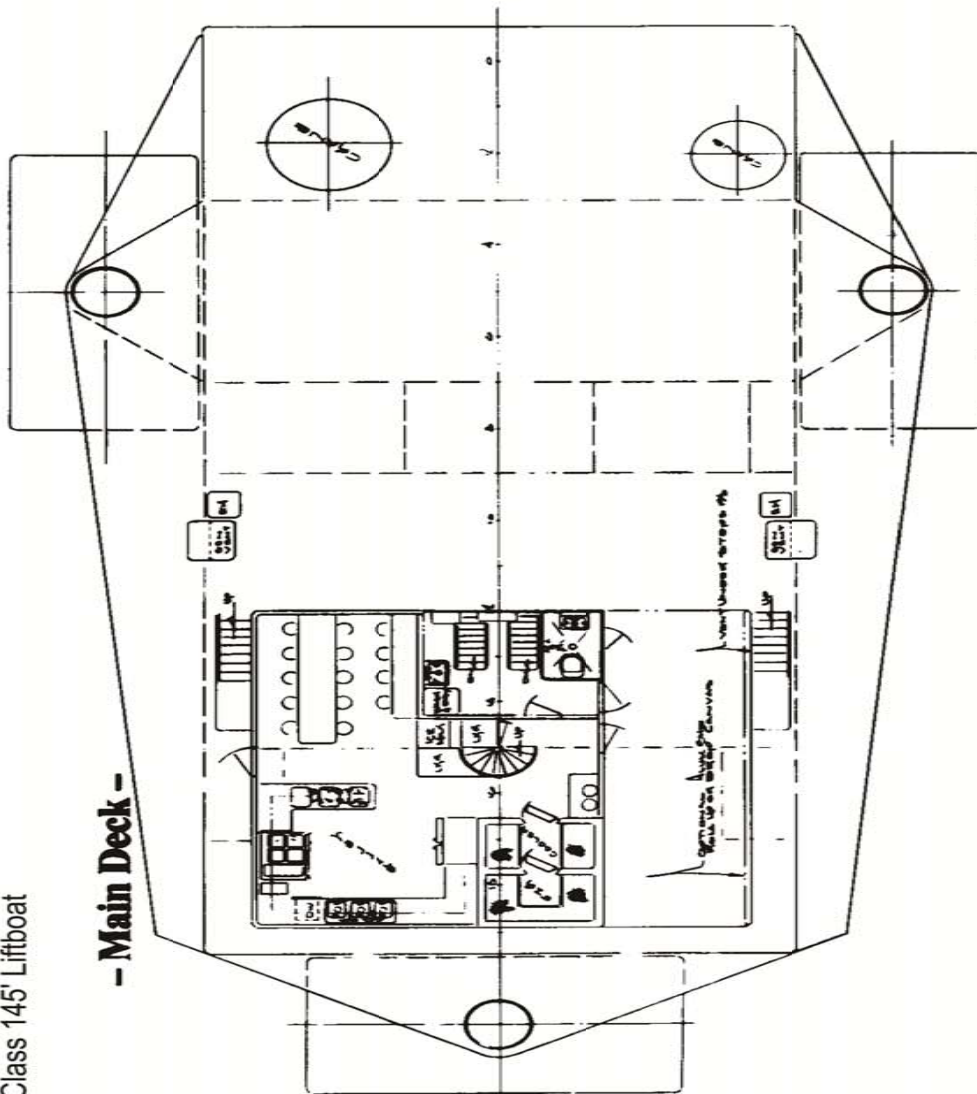
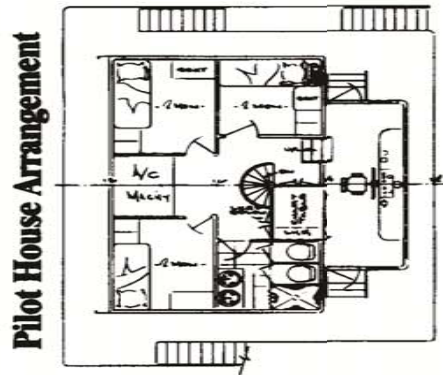
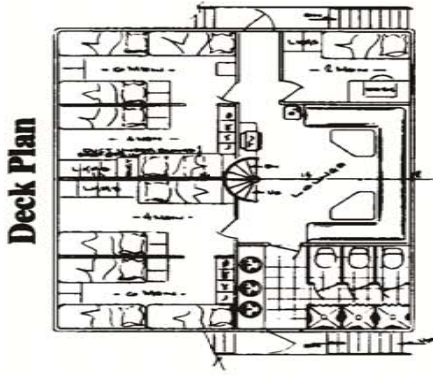
VHF	Loud Hailer
SSB	Radar
Fathometer	DDS TV
Tilt Alarm	
GPS	

ACCOMODATIONS

Available Berths (Excluding Crew)

22

M/V RAM VII CLASS 145' LEG GENERAL ARRANGEMENTS



Class 145' Lifboat

**M/V RAM VII
CLASS 145' LEG
BOOM CHARTS**

**CLASS 145' M/V RAM VII
LIFTING LOAD CAPACITY CHART
NAUTILUS MODEL 40-3-70 MARINE CRANE**

30 Foot Boom - Point & Mid Retracted

		Main Hoist				Auxiliary Hoist			
Radius (ft)	Boom Angle (deg)	6-Part Reeving		4-Part Reeving		1-Part Reeving			Boom Angle(deg)
		Static (LB)	Dynamic (LB)	Static (LB)	Dynamic (LB)	Static (LB)	Dynamic (LB)	Personnel (LB)	
10	70.5	53,760	53,200	36,576	36,576	5,331	5,331	2,446	10
15	60.5	53,760	42,054	36,576	36,576	5,331	5,331	2,446	15
25	49.0	50,000	33,250	36,576	33,250	5,331	5,331	2,446	20
30	0.0	23,500	15,627	23,500	15,675	5,331	5,331	2,446	30

50 Foot Boom - Point Retracted & Mid Extended

		Main Hoist				Auxiliary Hoist			
Radius (ft)	Boom Angle (deg)	6-Part Reeving		4-Part Reeving		1-Part Reeving			Boom Angle(deg)
		Static (LB)	Dynamic (LB)	Static (LB)	Dynamic (LB)	Static (LB)	Dynamic (LB)	Personnel (LB)	
10	78.0	53,760	46,550	36,576	36,576	5,331	5,331	2,446	10
15	72.5	53,760	37,905	36,576	36,576	5,331	5,331	2,446	15
20	66.5	45,000	29,925	36,576	29,925	5,331	5,331	2,446	20
25	60.5	37,600	25,004	36,576	25,004	5,331	5,331	2,446	25
30	53.5	36,000	23,940	36,000	23,940	5,331	5,331	2,446	30
35	46.5	27,700	18,420	27,700	18,420	5,331	5,331	2,446	35
40	38.0	26,000	17,290	26,000	17,290	5,331	5,331	2,446	40
45	27.0	20,374	13,548	20,374	13,548	5,331	5,331	2,446	45
50	0.0	11,576	7,698	11,576	7,698	5,331	5,331	2,446	50

70 Foot Boom - Point & Mid Extended

		Main Hoist				Auxiliary Hoist			
Radius (ft)	Boom Angle (deg)	6-Part Reeving		4-Part Reeving		1-Part Reeving			Boom Angle(deg)
		Static (LB)	Dynamic (LB)	Static (LB)	Dynamic (LB)	Static (LB)	Dynamic (LB)	Personnel (LB)	
12	80.0	50,000	33,250	36,576	33,250	5,331	5,331	2,446	12
15	77.3	47,500	31,587	36,576	31,587	5,331	5,331	2,446	15
20	73.5	43,502	28,928	36,576	28,928	5,331	5,331	2,446	20
25	69.0	35,600	23,674	35,600	23,674	5,331	5,331	2,446	25
30	65.0	27,825	18,503	27,825	18,503	5,331	5,331	2,446	30
35	60.3	24,300	16,159	24,300	16,159	5,331	5,331	2,446	35
40	55.5	20,765	13,808	20,765	13,808	5,331	5,331	2,446	40
45	50.5	18,900	12,568	18,900	12,568	5,331	5,331	2,446	45
50	45.0	17,035	11,328	17,035	11,328	5,331	5,331	2,446	50
55	38.8	15,500	10,307	15,500	10,307	5,331	5,331	2,446	55
60	32.0	14,090	9,369	14,090	9,369	5,331	5,331	2,446	60
65	23.0	13,143	8,740	13,143	8,740	5,331	5,331	2,446	65
70	0.0	7,500	4,987	7,500	4,987	5,331	4,987	2,446	70